

FRONT

# POISON

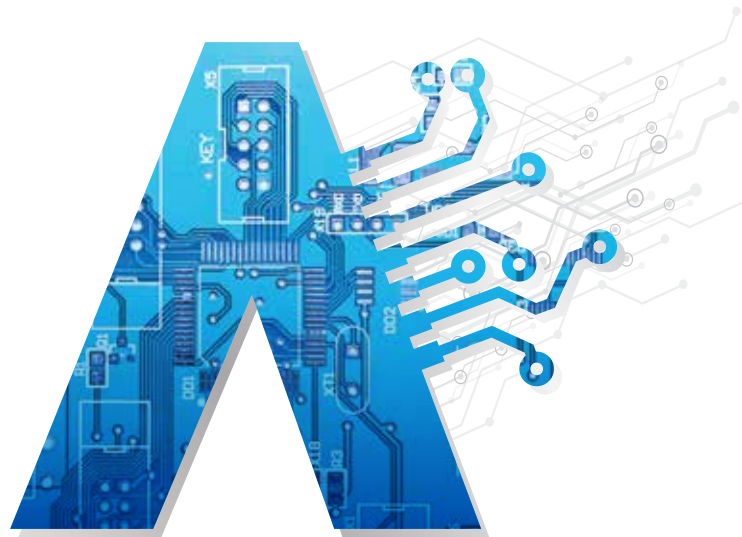
KEEP OUT OF REACH OF CHILDREN  
READ SAFETY DIRECTIONS  
FOR ANIMAL TREATMENT ONLY

# ABATECH<sup>®</sup>

**ULTRA POUR-ON ROUNDWORM, LIVER FLUKE  
& EXTERNAL PARASITICIDE FOR CATTLE**

Active Constituents: 300 mg/mL TRICLABENDAZOLE  
5 mg/mL ABAMECTIN

For the treatment  
and control of  
roundworms,  
liver fluke  
(all 3 stages)  
and external  
parasites of  
beef cattle.



# 15 L



#HUNTER RIVER CO.

25662F-2

183 mm

200 mm

ABATECH® ULTRA POUR-ON contains Abamectin, a member of the macrocyclic lactone family of chemicals. It is effective against sensitive strains of internal and external parasites. It also contains Triclabendazole, a member of the benzimidazoles family of chemicals, effective against liver fluke. Resistance may develop to any chemical.

#### Indications:

For the treatment and control of adult and immature stages of:

#### Gastro-intestinal roundworms

Barber's Pole Worm (*Haemonchus placei*)  
Small Brown Stomach Worm (*Ostertagia ostertagi*) (including inhibited stages)  
Small Intestinal Worm (*Cooperia oncophora*, *Cooperia punctata*)  
Stomach Hair Worm (*Trichostrongylus axei*)

Hookworm (*Bunostomum phlebotomum*)  
Large Bowel Worm (*Oesophagostomum radiatum*)  
Whipworm (*Trichuris spp.*)

Thin Necked Intestinal Worm (*Nematodirus spathiger*)

Intestinal Threadworm (*Strongyloides papillosus*)

**Lungworms** (*Dictyocaulus viviparus*)

**Liver fluke** (*Fasciola hepatica*) including adult (12 week old), immature (6 week old) and early immature (4 week old) larvae

#### Sucking and biting lice

Long nosed sucking louse (*Linognathus vituli*)  
Short nosed sucking louse (*Haematopinus eurysternus*)  
Biting louse (*Bovicola bovis*)  
Little sucking louse (*Solenopotes capillatus*)

#### Aids in control of

**Buffalo fly** (*Haematobia irritans exigua*)

**Cattle tick** (*Boophilus microplus*)

(Not recommended in strategic dipping programs for cattle tick control)

#### DIRECTIONS FOR USE

##### Restraints:

**DO NOT USE on cows which are producing or may in the future produce milk that may be used or processed for human consumption.**

##### Contraindications:

This product is contraindicated for use in calves under 50 kg bodyweight.

##### Dosage and Administration:

ABATECH® ULTRA POUR-ON dose rate is 1 mL / 10 kg body weight. Apply along the backline of the animal, using a standard pour-on applicator, in a strip starting between the shoulder blades. This product is not to be given orally or injected.

#### DOSE RATE TABLE:

LIVWEIGHT (KG)	DOSE VOLUME (ML)	NO. OF CATTLE TREATED
51 - 75	7.5	2000
76 - 100	10	1500
101 - 125	12.5	1200
126 - 150	15	1000
151 - 175	17.5	857
176 - 200	20	750
201 - 250	25	600
251 - 300	30	500
301 - 350	35	428
351 - 400	40	375
401 - 450	45	333
451 - 500	50	300
501 - 550	55	272
551 - 600	60	250
601 - 650	65	230

For animals heavier than 650 kg, dose at a rate of 1 mL / 10 kg body weight.

A representative sample of animals should be weighed before treatment either with scales or weighband. Dose according to the heaviest animal by liveweight in the group (cows, bulls, calves, heifers, etc.). Do not underdose. Where there is a large variation in size within the group, draft into two or more lines based on

\*Abatech is a registered trademark of The Hunter River Company.

bodyweight, to avoid excessive overdosing.

ABATECH® ULTRA POUR-ON is rainfast. Rain occurring as early as 2 hours after treatment will not affect the efficacy of the product.

A white deposit may form on the back of treated animals. This is quite normal. It is not a sign of treatment failure and should not be interfered with. Do not brush off or wash off. This deposit may last for a few days or weeks depending on weather conditions.

Temporary skin reaction may occur along the application site, especially if applied during very hot weather. This should resolve without treatment. If signs persist or worsen, contact your veterinarian.

After use clean all equipment with cooking oil. Do not use water.

#### General Directions:

**NOT TO BE USED FOR ANY PURPOSE, OR IN ANY MANNER, CONTRARY TO THIS LABEL UNLESS AUTHORISED UNDER APPROPRIATE LEGISLATION**

#### WITHHOLDING PERIODS

**MEAT: DO NOT USE less than 49 days before slaughter for human consumption.**

**Beef calves born to cows that were treated with ABATECH® ULTRA POUR-ON during pregnancy and calves suckling cows that have been treated during lactation must not be slaughtered for human consumption for 49 days after treatment of the dam.**

**MILK: DO NOT USE on cows which are producing or may in the future produce milk that may be used or processed for human consumption.**

#### TRADE ADVICE

**EXPORT SLAUGHTER INTERVAL (ESI): DO NOT USE less than 140 days before slaughter for export. Before using this product, confirm the current ESI from The Hunter River Company Pty Limited on (03) 5820 8400 or the APVMA website ([www.apvma.gov.au/residues](http://www.apvma.gov.au/residues)).**

**Beef calves born to cows that were treated with ABATECH® ULTRA POUR-ON during pregnancy and calves suckling cows that have been treated during lactation must not be slaughtered for the export market for 140 days after treatment of the dam.**

#### SAFETY DIRECTIONS

Harmful if swallowed. Will irritate the eyes and skin. Avoid contact with eyes and skin. When opening the container and using the product, wear cotton overalls buttoned to the neck and wrist and a washable hat, elbow-length PVC gloves and goggles. If product in eyes, wash it out immediately with water. Wash hands after use. After each day's use, wash gloves, goggles and contaminated clothing.

#### FIRST AID INSTRUCTIONS

If poisoning occurs, contact a doctor or Poisons Information Centre. Phone Australia 13 11 26. If skin contact occurs, remove contaminated clothing and wash skin. If in eyes, hold eyes open, flood with water for at least 15 minutes and see a doctor.

#### ADDITIONAL USER SAFETY

Additional information is listed in the safety data sheet.

#### ENVIRONMENTAL PROTECTION

Very toxic to aquatic life. Do not contaminate dams, rivers, streams or other waterways with the chemical or used container.

#### DISPOSAL

Triple-rinse container and dispose of rinsate in compliance with relevant local, state or territory government regulations. Do not dispose of undiluted chemicals on-site. If recycling, replace cap and return clean container to recycler or designated collection point. If the container has the drumMUSTER logo visible, and has been thoroughly cleaned and dried, and is free of any visible residues, it can be recycled at any drumMUSTER collection or similar container management program site. The cap should not be replaced, but may be recycled separately with the container. If not recycling, break, crush, or puncture container and deliver to an approved waste management facility. If an approved waste management facility is not available, bury the broken, crushed or punctured containers 500 mm below the surface in a disposal pit specifically marked and set up for this purpose clear of waterways, vegetation and tree roots, in compliance with relevant local, state or territory government regulations. Do not burn empty containers or product.

#### STORAGE

Store below 30°C (room temperature).

BATCH:

EXP:



**UN 2902, PESTICIDE,  
LIQUID, TOXIC,  
N.O.S., PG III**

**Toxic if inhaled.  
May cause respiratory irritation.  
Suspected of damaging the  
unborn child.  
Causes damage to organs  
through prolonged or repeated  
exposure.  
Do not eat, drink or smoke when  
using this product.  
Use only outdoors or in a well  
ventilated area.  
IF SWALLOWED: Rinse mouth. Do  
NOT induce vomiting.  
Store locked up. Protect from  
sunlight.**



2566208-3



9 348896 4002113

183 mm